



# GMT MONTHLY MEMBERSHIP PROGRESS REPORT

Results as of: 1/31/2020

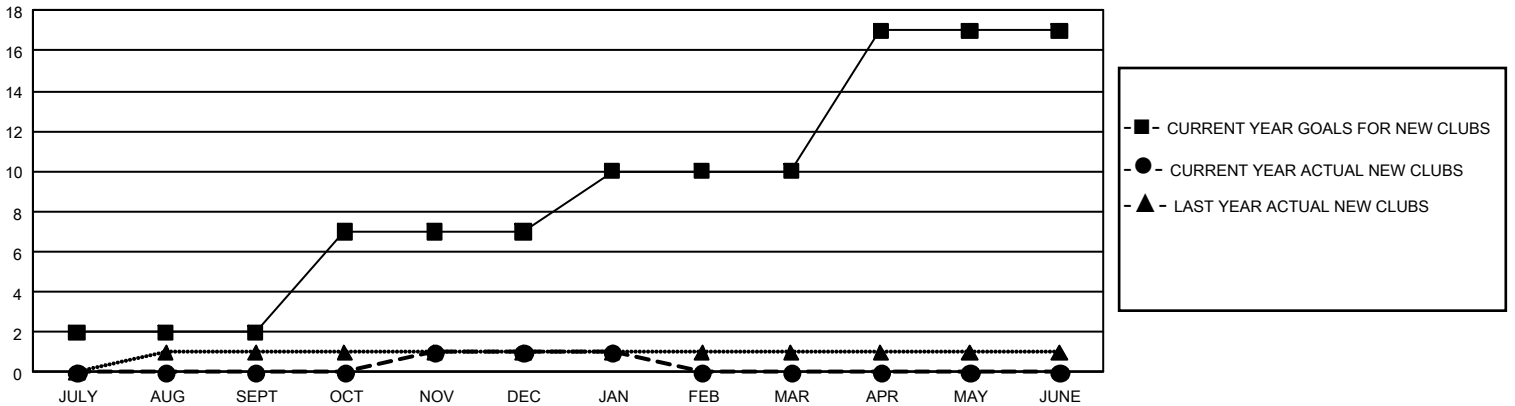
## GMT Constitutional Area 1, Group G

GMT: OPEN

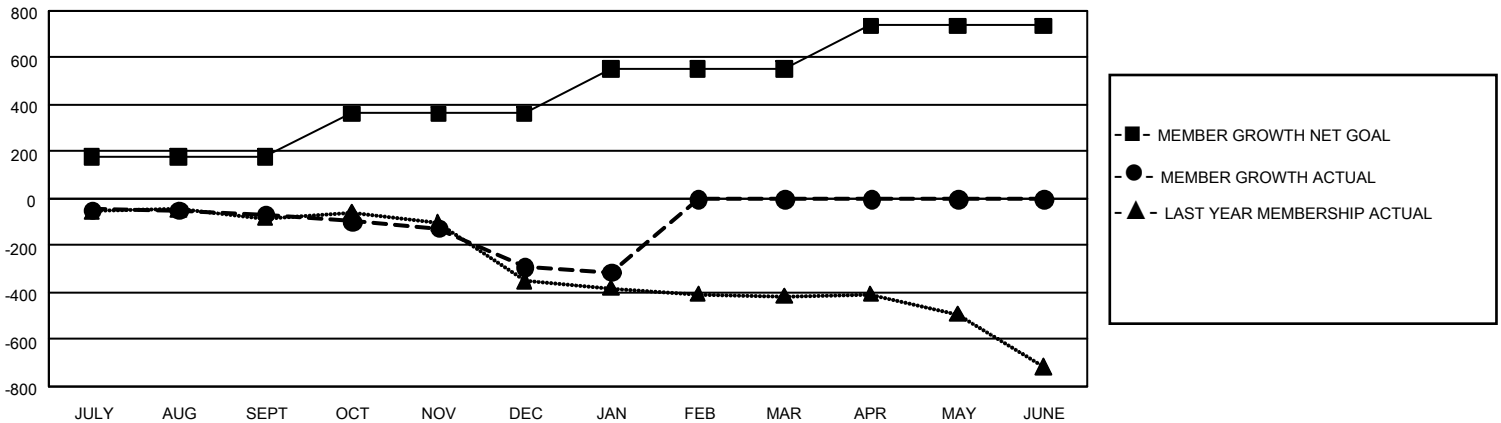
REPORT DOES NOT INCLUDE CLUBS IN UNDISTRICTED AREAS.

Clubs				Members			
RESULTS FOR 2019-2020				RESULTS FOR 2019-2020			
QUARTER	NEW CLUB GOAL	NEW CLUBS	DROPPED CLUBS	QUARTER	MEMBER GROWTH NET GOAL	MEMBER GROWTH ACTUAL	DROPPED MEMBERS ACTUAL (including transfers)
JULY/AUG/SEPT	6	0	3	JULY/AUG/SEPT	531	244	271
OCT/NOV/DEC	15	1	6	OCT/NOV/DEC	555	259	451
JAN/FEB/MAR	9	0	0	JAN/FEB/MAR	567	122	132
APR/MAY/JUNE	21	0	0	APR/MAY/JUNE	558	0	0

**GOALS AND ACTUAL NEW CLUBS CUMULATIVE**



**GOALS AND ACTUAL MEMBERS CUMULATIVE**



<b>DROPPED CLUBS: 9</b>	224 CLUBS OF 591 ADDED 1 OR MORE NEW MEMBERS	<b><u>GENDER DISTRIBUTION</u></b> MALE            9,443 (70.48%) FEMALE          3,955 (29.52%)
<b><u>DROPPED MEMBERS</u></b> DECEASED            116 CLUB CANCELLED      48 OTHER                    690 <hr/> TOTAL                    854	<a href="#">CLICK HERE FOR CUMULATIVE MEMBERSHIP DATA</a>	TOTAL FAMILY UNIT MEMBERS            2,787  FAMILY MEMBERS PAYING HALF DUES      1,417